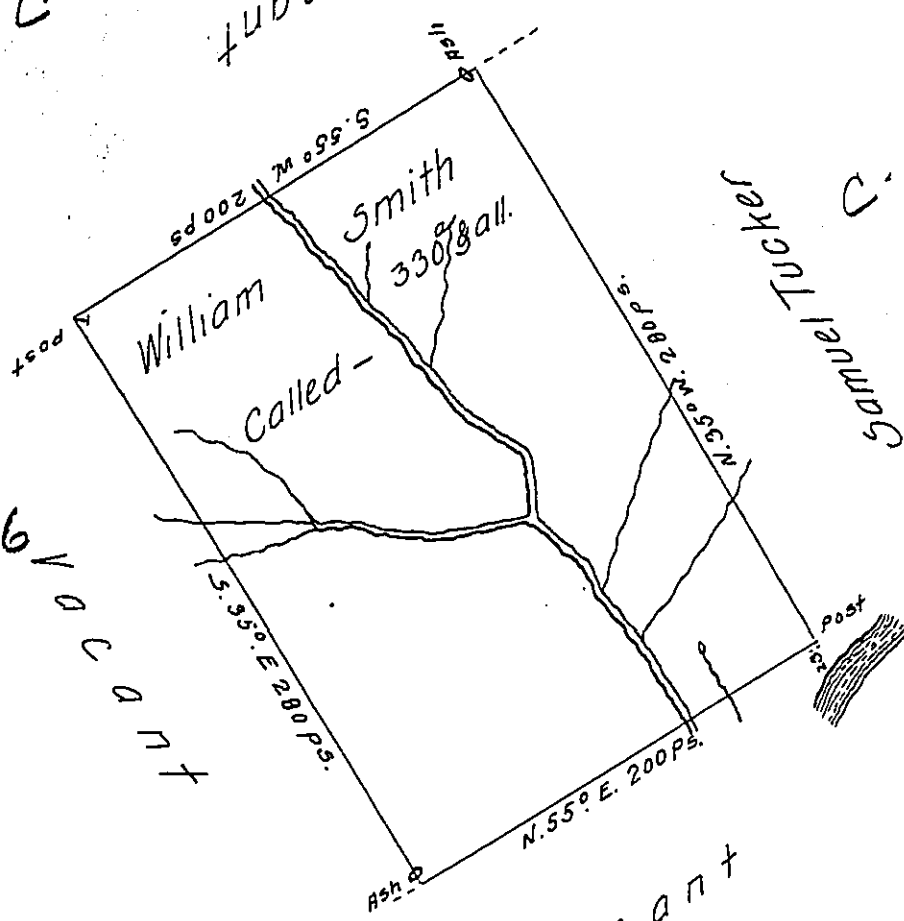


C-94-62

JUDICIAL

Samuel Tucker  
C-234-153

C-13-166  
K O C O N T



Vacant  
D 23-66

C 183-245

Situated on the West Side of Laurel Hill Creek Opposite the Beaver Dam  
 & below the Mouth of Lost Run in Turkey Foot Township Bedford County  
 and Surveyed the 14<sup>th</sup> day of February 1775. In pursuance of a Warrant  
 dated the Ninth day of August 1774.

To John Lukens Esq. S. G. } p. A. McEane Dept-

IN TESTIMONY that the above is a copy of the original remaining on file in  
 the Department of Internal Affairs of Pennsylvania, made  
 conformably to an Act of Assembly approved the 16th day of  
 February 1833, I have hereunto set my hand and caused  
 the Seal of said Department to be affixed at Harrisburg,  
 this twenty ninth day of December 1906.

*Loacn D. [Signature]*  
 Secretary of Internal Affairs.